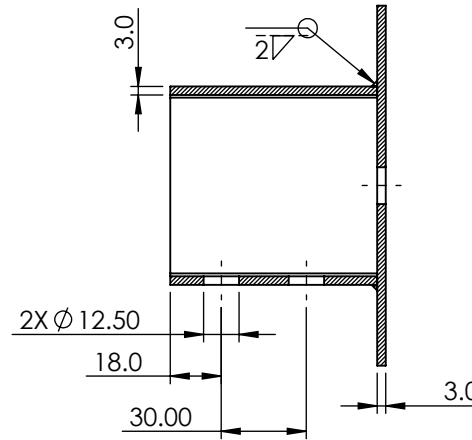


NOTES:

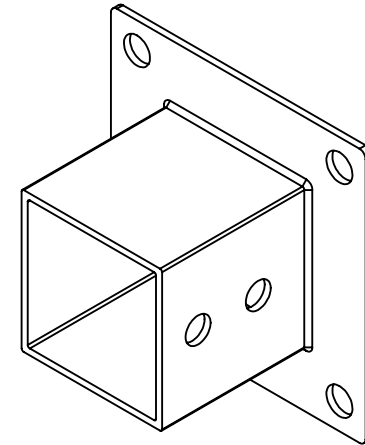
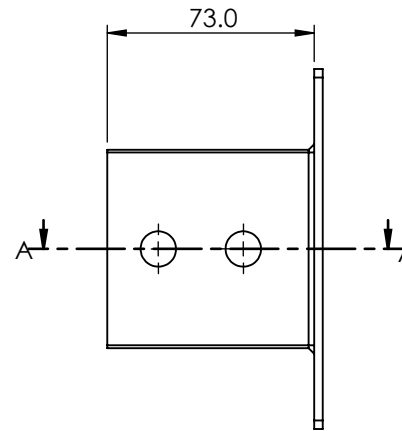
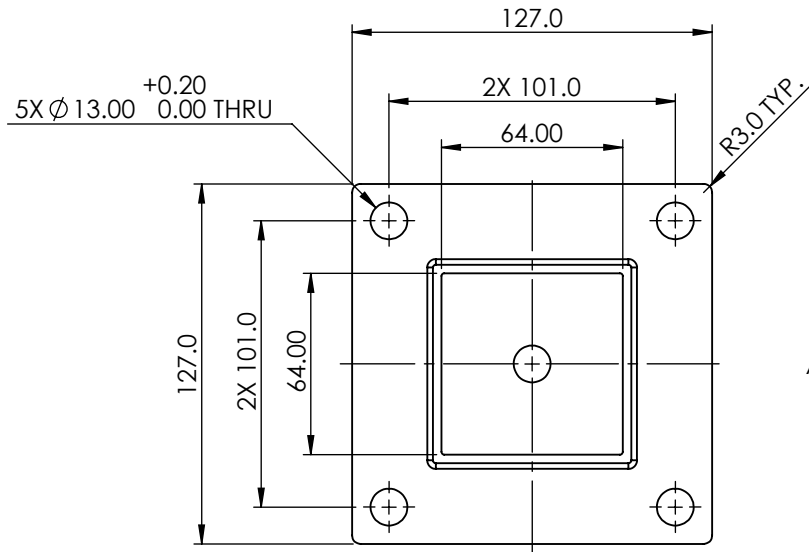
1. PART MUST MEET REQUIREMENTS OF ES0020.
2. MATERIAL IS STAINLESS STEEL 304.
3. REMOVE ALL BURRS AND SHARP EDGES.
0.25 X 45° MAX EDGE BREAK.

REVISIONS				
REV.	ECN	REVISION DESCRIPTION	CHKD	DATE
A			CB	6 MAY 2021

HYPRO A-L " METRIC 03/04/2020 STANDARD



SECTION A-A



375 Fifth Avenue NW
New Brighton, MN 55112
(651) 766-6300

SYM.	CHARACTERISTIC TYPE	Ppk/Cpk MIN	THIS DRAWING IS THE CONFIDENTIAL PROPERTY OF PENTAIR LTD, AND WITHOUT WRITTEN AUTHORIZATION, MUST NOT BE COPIED OR COMMUNICATED		PART VOLUME 104893.47 mm ³	PART WEIGHT 104.89 g	DRAWING BASED ON ASME Y14.5M-1994	
☆	IMPORTANT	≥ 1.00	UNLESS OTHERWISE SPECIFIED ALL DIMENSIONS ARE IN MM		SURFACE TREATMENT N/A		THIRD ANGLE PROJECTION	
☆	SIGNIFICANT	> 1.33						
☆	CRITICAL	> 1.67						
DWG BY: ARS		DATE: 05/15/2020	TOLERANCES (+ OR -) ANGLE: 0.5°		HEAT TREATMENT N/A		PART DESCRIPTION MOUNTING BRACKET CTS	
CHECKED BY:		DATE:	DECIMAL X.X: 0.2		MATERIAL		PART NUMBER	
APPROVED BY:		DATE:	DECIMAL X.XX: 0.10		SEE NOTES		2420-0058	
SIZE A	SCALE 3:8	DO NOT SCALE PRINT	SHEET NO. 1 OF 1	DECIMAL X.XXX: 0.050	SURFACE FINISH 3.2 Ra MAX.		REV. A.01	